

**Anti-IRX3 Antibody**  
**Rabbit polyclonal antibody to IRX3**  
**Catalog # AP60328****Specification**

---

**Anti-IRX3 Antibody - Product Information**

|                   |                        |
|-------------------|------------------------|
| Application       | <b>WB, IHC</b>         |
| Primary Accession | <a href="#">P78415</a> |
| Other Accession   | <a href="#">P81067</a> |
| Reactivity        | <b>Human, Rat</b>      |
| Host              | <b>Rabbit</b>          |
| Clonality         | <b>Polyclonal</b>      |
| Calculated MW     | <b>52119</b>           |

**Anti-IRX3 Antibody - Additional Information****Gene ID** 79191**Other Names**

IRXB1; Iroquois-class homeodomain protein IRX-3; Homeodomain protein IRXB1; Iroquois homeobox protein 3

**Target/Specificity**

Recognizes endogenous levels of IRX3 protein.

**Dilution**WB~~WB (1/500 - 1/1000), IH (1/100 - 1/200)  
IHC~~1:100~500**Format**

Liquid in 0.42% Potassium phosphate, 0.87% Sodium chloride, pH 7.3, 30% glycerol, and 0.09% (W/V) sodium azide.

**Storage**

Store at -20 °C.Stable for 12 months from date of receipt

**Anti-IRX3 Antibody - Protein Information****Name** IRX3**Synonyms** IRXB1**Function**

Transcription factor involved in SHH-dependent neural patterning. Together with NKX2-2 and NKX6-1 acts to restrict the generation of motor neurons to the appropriate region of the neural tube. Belongs to the class I proteins of neuronal progenitor factors, which are repressed by SHH signals. Involved in the transcriptional repression of MNX1 in non-motor neuron cells. Acts as a regulator of energy metabolism.

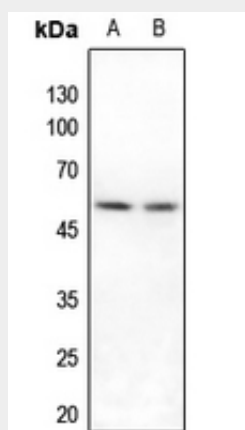
**Cellular Location**

Nucleus.

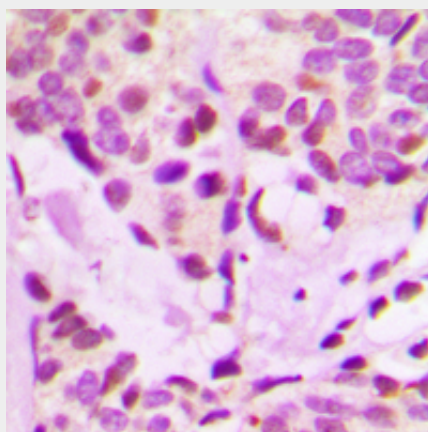
**Anti-IRX3 Antibody - Protocols**

Provided below are standard protocols that you may find useful for product applications.

- [Western Blot](#)
- [Blocking Peptides](#)
- [Dot Blot](#)
- [Immunohistochemistry](#)
- [Immunofluorescence](#)
- [Immunoprecipitation](#)
- [Flow Cytometry](#)
- [Cell Culture](#)

**Anti-IRX3 Antibody - Images**

Western blot analysis of IRX3 expression in Hela (A), A549 (B) whole cell lysates.



Immunohistochemical analysis of IRX3 staining in human breast cancer formalin fixed paraffin embedded tissue section. The section was pre-treated using heat mediated antigen retrieval with sodium citrate buffer (pH 6.0). The section was then incubated with the antibody at room temperature and detected using an HRP conjugated compact polymer system. DAB was used as the chromogen. The section was then counterstained with haematoxylin and mounted with DPX.

**Anti-IRX3 Antibody - Background**

KLH-conjugated synthetic peptide encompassing a sequence within the center region of human IRX3. The exact sequence is proprietary.